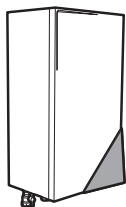




Installation manual

Daikin Altherma – Low temperature split



EBBH04CB
EBBH08CB
EBBH11CB
EBBH16CB
EBBX04CB
EBBX08CB
EBBX11CB
EBBX16CB

Installation manual
Daikin Altherma – Low temperature split

English

CE-DECLARATION-OF-CONFORMITY	CE-DECLARAÇÃO-DE-CONFORMIDADE	CE-ERKLÄRUNG ÜBERSINIGUNG	CE-IZJAVA O USKLADNOSTI	CE-ATTIKTESDEKLARACIA
CE-KONFORMITÄTSERKLÄRUNG	CE-DICHARAZACIJE KONFORMITA	CE-ZABEZPEČENIE O COOTBETCTBIVNI	CE-MIEGFELELOSEG-NYLTAKOZAT	CE-ATBLSTIBASDEKLARACIA
CE-DECLARATION-OF-CONFORMITE	CE-DIKHARAZACIJE KONFORMITAZI	CE-OVERENSTEMMELSE ERKLRUNG	CE-DEKLARACIJA ZGODNOSTI	CE-VYHLASENIE-ZHODY
CE-KONFORMITÄTSERKLRUNG	CE-DIKHARAZACIJE KONFORMITAZE	CE-FÖRSÄKRAN-OM ÖVERENSTEMMELSE	CE-DECLARAȚIE-DE CONFORMITATE	CE-VYHLASENIE-ZHODY
				CE-IZJAVA O SKLADNOSTI
				CE-VASTAVUSDEKLARACIJOON
				CE-DECLARAȚIE-DE CONFORMITATE
				CE-DECLARAȚIE-DE CONFORMITATE

Daikin Europe N.V.

- [illegible]

- [illegible]

- [illegible]

EHBH08CB3V, EHBH08CB9W, EHBX11CB3V, EHBX11CB9W, EHBH16CB3V, EHBH16CB9W,
EHBH04CB3V, EHBX04CB3V, EHBX04CB9W, EHBX11CB3V, EHBX11CB9W, EHBX16CB3V, EHBX16CB9W,

- 01 are in conformity with the following standard(s) or other normative document(s), provided that these are used in accordance with our instructions:
- 02 den(ben) folgenden Norm(en) oder einen anderen Normdokument oder -dokumenten entsprechend/sprechend, unter der Voraussetzung, dass sie gemäß unseren Anweisungen eingesetzt werden:
- 03 são conformes a baix(s) norma(s) ou outrel(s) norma(s) normal(is), para além q(u)is se utilizarem conformemente a nos instruções:
- 04 conformes à(s) norme(s) ou à(s) norme(s) normale(s), en plus de ce que vous devez utiliser conformément à nos instructions:
- 05 están en conformidad con la(s) siguiente(s) norma(s) u otra(s) documento(s) normativo(s), siempre que sean utilizados de acuerdo a nuestras instrucciones:
- 06 sono conformi al(l) seguente(s) standard(s) o altro(s) documento(i) a carattere normativo, a patto che vengano usati in conformità alle istruzioni:
- 07 είναι σύμφωνη με τη(α) ακόλουθ(η) πρότυπο(α) ή άλλο(ν) έγγραφο(α) κανονιστικό(α), υπό την προϋπόθεση ότι χρησιμοποιούνται σύμφωνα με τις οδηγίες μας.

- [illegible]

16. megleđene, az alábbi szavakhoz, vagy egyéb irányadó dokumentumokhoz, ha azokat előírás szerint használják.
17. szöveghez tartozó következő dokumentumokhoz, ahol a dokumentumokhoz való hivatkozás az előírásnak megfelelően történik.
18. a szövegben említett dokumentumokhoz, ahol a dokumentumokhoz való hivatkozás az előírásnak megfelelően történik.
19. a szövegben említett dokumentumokhoz, ahol a dokumentumokhoz való hivatkozás az előírásnak megfelelően történik.
20. a szövegben említett dokumentumokhoz, ahol a dokumentumokhoz való hivatkozás az előírásnak megfelelően történik.
21. a szövegben említett dokumentumokhoz, ahol a dokumentumokhoz való hivatkozás az előírásnak megfelelően történik.
22. a szövegben említett dokumentumokhoz, ahol a dokumentumokhoz való hivatkozás az előírásnak megfelelően történik.
23. a szövegben említett dokumentumokhoz, ahol a dokumentumokhoz való hivatkozás az előírásnak megfelelően történik.
24. a szövegben említett dokumentumokhoz, ahol a dokumentumokhoz való hivatkozás az előírásnak megfelelően történik.
25. a szövegben említett dokumentumokhoz, ahol a dokumentumokhoz való hivatkozás az előírásnak megfelelően történik.

EN60335-2-40,

- | | |
|---|----------------------------------|
| 11 following the provisions of | 18 in urma prevederilor |
| 12 gemäß den Vorschriften der | 19 în urma prevederilor |
| 13 conformément aux stipulations des | 20 după prevederile |
| 14 overeenkomstig de bepalingen van | 21 în conformanță cu prevederile |
| 15 según las disposiciones de | 22 în conformanță cu prevederile |
| 16 secondo le prescrizioni per | 23 în conformanță cu prevederile |
| 17 in accordance with the provisions of | 24 în conformanță cu prevederile |
| 18 в соответствии с положениями | 25 în conformanță cu prevederile |

- Low Voltage 2006/95/EC
Electromagnetic Compatibility 2004/108/EC

- [illegible]

Low Voltage 2006/95/EC
Electromagnetic Compatibility 2004/108/EC *

- | | | | |
|--------------|--|----------------|---|
| 01 Note* | as set in <A> and judged positively by
according to the Certificate <C> | 06 Nota* | delineato nel <A> e giudicato positivamente da
secondo il Certificato <C> |
| 02 Hinweis* | wie in <A> aufgeführt von positiv
beurteilt. Zertifikat <C> | 07 Звѣдують* | яко в <A> оцѣнено по <C> положително |
| 03 Remarque* | Beurteilung dans <A> de évalué positivement par <C>
certifié par le Zertifikat <C> | 08 Nota* | tal como estabelecido em <A> e positivamente
positivo de de acordo com o Certificado <C> |
| 04 Bemerk* | zoals vermeld in <A> en positief beoordeeld door
 overeenkomstig Certificaat <C>
 overeenkomstig Certificaat <C> | 09 Примечание* | како указано в <A> и в соответствии
с положительным решением согласно
Сертификату <C> |
| 05 Nota* | positivamente par de acuerdo con el
Certificado <C> | 10 Bemerk* | sim anteriori <A> og positivt vurderet af i henhold
til Certifikat <C> |

- | | | | |
|----|--------------|---|---|
| 11 | Information* | erlig, <A> godkännt av <A> erlig
Certifikat <A> | a) <A> alupin, <A> <A> izpaziba a megjelölés
a) <A> tanúsítvány szert |
| 12 | Merk* | bedömleken om <A> godkänn positiv
bedömelse om <A> folge Certifikat | szemle a zokomtelek <A> pozitívnyá
szemle <A> Swadecem <A> |
| 13 | Huon* | pika on isvásty askijassa <A> ja pika <A>
on isvásty Certifikat <A> mukasesi | esem cum esse stabit <A> isvásty pozitiv, de
esem cum esse stabit <A> Certifikat <A> |
| 14 | Poznámkat* | jak bio udnerov <A> a pozitívny zjšteno
<A> vsledu a sevedčeno <A> | kotje je dobovero <A> a doobreno s strani <A>
vsledu us certifikatom <A> |
| 15 | Napomena* | kako je dabrano <A> pozitivno opjeljeno
od <A> prema Certifikat <A> | kipu on naitadno dokument <A> ja heaks
reklud <A> jargi vastavai certifikat <A> |

- | | |
|-----------------|--|
| 21 Zabeleženik* | izgled je prikazan v <A> in ohranjeno topografsko
ot- črpano <A> Campidivara <C>
kajp nastavlja <A> in keip tečajna nuspresa
papaj Serifika <A> in atibist pozitivijam
ka noradits <A> in atibist pozitivijam
veřejumam saskina ar Serifika <C>
ako bolo uvedeno v <A> a pozitivne zisane
v slude s osvetlenim <C>
Sertifikašina gore
<A> dia belidiligi gibive <C> Sertifikašina
tarafindu olumu darak degarjetinggi gbi. |
| 22 Passtabi* | |
| 23 Plezmes* | |
| 24 Pozniatla* | |
| 25 Not* | |

Table of contents

1	About the documentation	3
1.1	About this document.....	3
2	About the box	4
2.1	Indoor unit.....	4
2.1.1	To remove the accessories from the indoor unit.....	4
3	Preparation	4
3.1	Preparing water piping.....	4
3.1.1	To check the water volume and flow rate	4
3.2	Preparing electrical wiring	4
3.2.1	Overview of electrical connections for external and internal actuators	4
4	Installation	5
4.1	Opening the units	5
4.1.1	To open the indoor unit	5
4.1.2	To open the switch box cover of the indoor unit	5
4.2	Mounting the indoor unit	6
4.2.1	To install the indoor unit.....	6
4.2.2	To install the drain pan kit	7
4.3	Connecting the refrigerant piping	7
4.3.1	To connect the refrigerant piping to the indoor unit	7
4.4	Connecting the water piping	7
4.4.1	To connect the water piping	7
4.4.2	To fill the water circuit	7
4.4.3	To fill the domestic hot water tank	8
4.4.4	To insulate the water piping	8
4.5	Connecting the electrical wiring	8
4.5.1	About electrical compliance	8
4.5.2	To connect the electrical wiring on the indoor unit.....	8
4.5.3	To connect the main power supply	9
4.5.4	To connect the backup heater power supply	9
4.5.5	To connect the user interface	10
4.5.6	To connect the shut-off valve	11
4.5.7	To connect the electrical meters	11
4.5.8	To connect the domestic hot water pump	11
4.5.9	To connect the alarm output	12
4.5.10	To connect the space cooling/heating ON/OFF output	12
4.5.11	To connect the changeover to external heat source...	12
4.5.12	To connect the power consumption digital inputs	12
4.6	Finishing the indoor unit installation	12
4.6.1	To fix the user interface cover to the indoor unit.....	12
4.6.2	To close the indoor unit.....	12
5	Configuration	13
5.1	Overview: Configuration	13
5.1.1	To access the most used commands	13
5.2	Basic configuration	14
5.2.1	Quick wizard: Language / time and date.....	14
5.2.2	Quick wizard: Standard	14
5.2.3	Quick wizard: Options	14
5.2.4	Quick wizard: Capacities (energy metering)	15
5.2.5	Space heating/cooling control	15
5.2.6	Domestic hot water control	17
5.2.7	Contact/helpdesk number	17
5.3	Menu structure: Overview installer settings.....	18
6	Commissioning	19
6.1	Checklist before test run	19
6.2	To perform an air purge	19
6.3	To perform a test run	19
6.4	To perform an actuator test run	19
6.4.1	Possible actuator test runs.....	20
6.5	Checklist before leaving the installation site.....	20
6.6	To perform an underfloor heating screed dryout	20

7	Hand-over to the user	20
8	Technical data	21
8.1	Wiring diagram	21
8.1.1	Wiring diagram: Indoor unit.....	21

1 About the documentation

1.1 About this document

Target audience

Authorised installers

Documentation set

This document is part of a documentation set. The complete set consists of:

Document	Contains...	Format
General safety precautions	Safety instructions that you must read before installing	Paper (in the box of the indoor unit)
Indoor unit installation manual	Installation instructions	
Outdoor unit installation manual	Installation instructions	Paper (in the box of the outdoor unit)
Installer reference guide	Preparation of the installation, technical specifications, good practices, reference data, ...	Digital files on http://www.daikineurope.com/support-and-manuals/product-information/ .
Addendum book for optional equipment	Additional info about how to install optional equipment	Paper (in the box of the indoor unit) Digital files on http://www.daikineurope.com/support-and-manuals/product-information/ .

Latest revisions of the supplied documentation may be available on the regional Daikin website or via your dealer.

The original documentation is written in English. All other languages are translations.

2 About the box

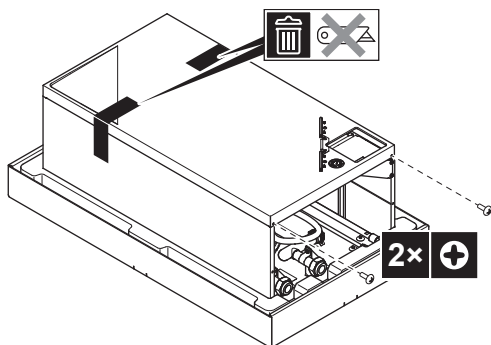
2 About the box

2.1 Indoor unit

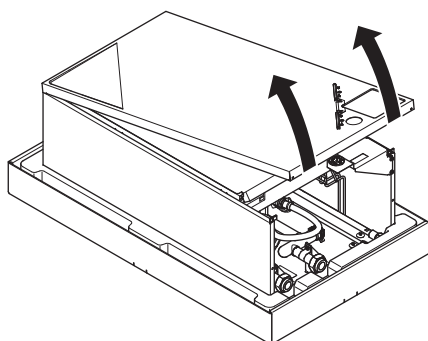
2.1.1 To remove the accessories from the indoor unit

The general safety precautions, the indoor unit installation manual, the operation manual and the addendum book for optional equipment are located in the upper part of the box. Follow the procedure below to remove the other accessories.

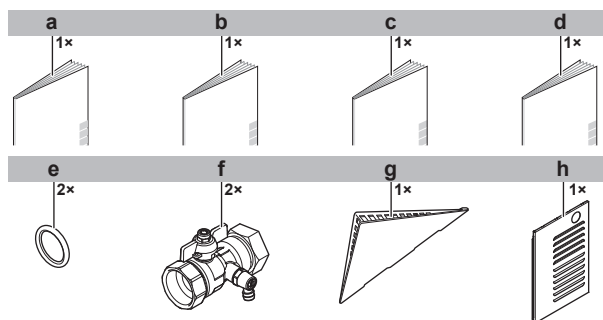
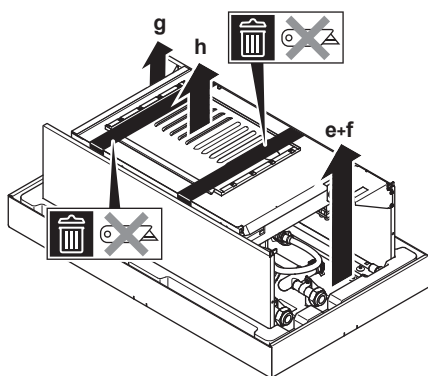
- 1 Remove the tape.



- 2 Tilt the bottom side of the front panel upwards and remove it.



- 3 Remove the accessories.



- a General safety precautions
b Addendum book for optional equipment

- c Indoor unit installation manual
d Operation manual
e Sealing ring for shut-off valve
f Shut-off valve
g User interface cover
h Top plate of indoor unit

3 Preparation

3.1 Preparing water piping

3.1.1 To check the water volume and flow rate

Minimum water volume

Check that the total water volume in the installation is minimum 10 litre for EHBH/X04+08 and 20 litre for EHBH/X11+16, the internal water volume of the indoor unit NOT included.



NOTICE

When circulation in each space heating loop is controlled by remotely controlled valves, it is important that the minimum water volume is guaranteed, even if all of the valves are closed.

Minimum flow rate

Check that the minimum flow rate (required during defrost/backup heater operation) in the installation is guaranteed in all conditions.



NOTICE

When circulation in each or certain space heating loop is controlled by remotely controlled valves, it is important that the minimum flow rate is guaranteed, even if all valves are closed. In case the minimum flow rate cannot be reached, a flow error 7H will be generated (no heating/operation).

See the installer reference guide for more information.

Minimum required flow rate during defrost/backup heater operation	
04+08 models	12 l/min
11+16 models	15 l/min

See the recommended procedure as described in "6.5 Checklist before leaving the installation site" on page 20.

3.2 Preparing electrical wiring

3.2.1 Overview of electrical connections for external and internal actuators

Item	Description	Wires	Maximum running current
Outdoor unit and indoor unit power supply			
1	Power supply for outdoor unit	2+GND or 3+GND	(a)
2	Power supply and interconnection cable to indoor unit	3	(c)
3	Power supply for backup heater	See table below.	—
4	Preferential kWh rate power supply (voltage free contact)	2	(e)
5	Normal kWh rate power supply	2	6.3 A

Item	Description	Wires	Maximum running current
User interface			
6	User interface	2	(f)
Optional equipment			
7	3-way valve	3	100 mA ^(b)
8	Power supply for booster heater and thermal protection (from indoor unit)	4+GND	(c)
9	Power supply for booster heater (to indoor unit)	2+GND	13 A
10	Domestic hot water tank thermistor	2	(d)
11	Power supply for bottom plate heater	2	(b)
12	Room thermostat	3 or 4	100 mA ^(b)
13	Outdoor ambient temperature sensor	2	(b)
14	Indoor ambient temperature sensor	2	(b)
15	Heat pump convector	4	100 mA ^(b)
Field supplied components			
16	Shut-off valve	2	100 mA ^(b)
17	Electricity meter	2 (per meter)	(b)
18	Domestic hot water pump	2	(b)
19	Alarm output	2	(b)
20	Changeover to external heat source control	2	(b)
21	Space cool/heat operation control	2	(b)
22	Power consumption digital inputs	2 (per input signal)	(b)

- (a) Refer to name plate on outdoor unit.
 (b) Minimum cable section 0.75 mm².
 (c) Cable section 2.5 mm².
 (d) The thermistor and connection wire (12 m) are delivered with the domestic hot water tank.
 (e) Cable section 0.75 mm² till 1.25 mm²; maximum length: 50 m. Voltage-free contact shall ensure the minimum applicable load of 15 V DC, 10 mA.
 (f) Cable section 0.75 mm² till 1.25 mm²; maximum length: 500 m. Applicable for both single user interface and dual use interface connection.

**NOTICE**

More technical specifications of the different connections are indicated on the inside of the indoor unit.

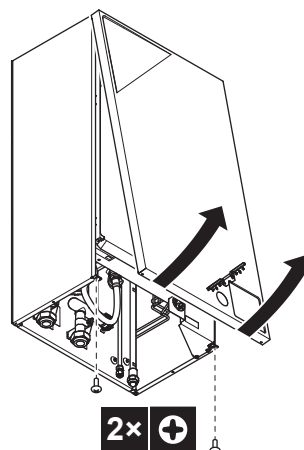
Backup heater type	Power supply	Required number of conductors
*3V	1× 230 V	2+GND
*9W	1× 230 V	2+GND + 2 bridges
	3× 230 V	3+GND + 1 bridge
	3× 400 V	4+GND

4 Installation

4.1 Opening the units

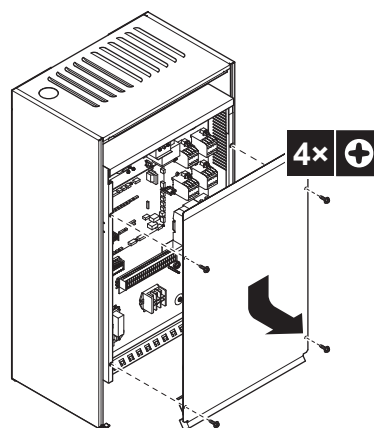
4.1.1 To open the indoor unit

- 1 Loosen and remove the 2 screws that fix the front panel.



- 2 Tilt the front panel towards you and remove the front panel.

4.1.2 To open the switch box cover of the indoor unit



4 Installation

4.2 Mounting the indoor unit

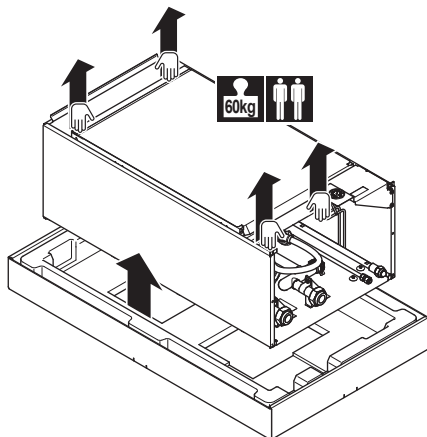
4.2.1 To install the indoor unit



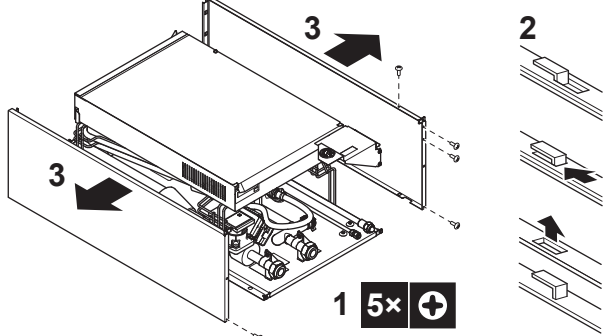
CAUTION

Do NOT grasp the piping to lift the indoor unit.

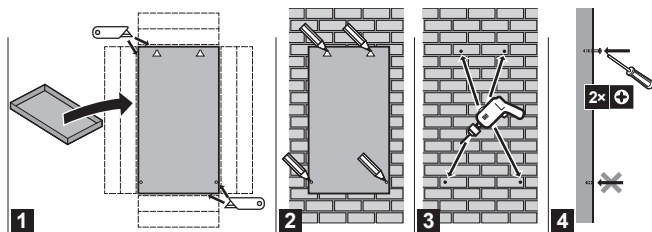
- 1 Lift the unit from the package.



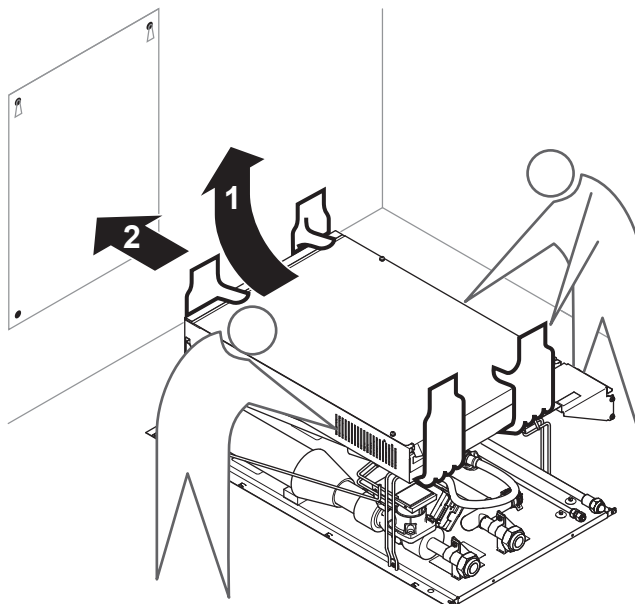
- 2 Remove the 4 screws from the bottom of the unit. Unhook and remove the side plates.



- 3 Put the installation pattern (see packing) on the wall and follow the steps as shown below.

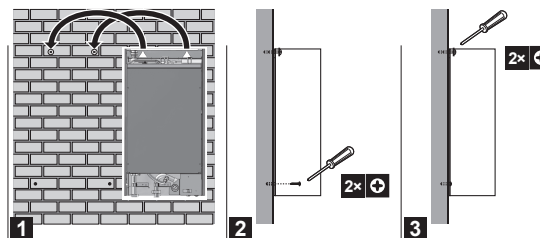


- 4 Lift the unit.

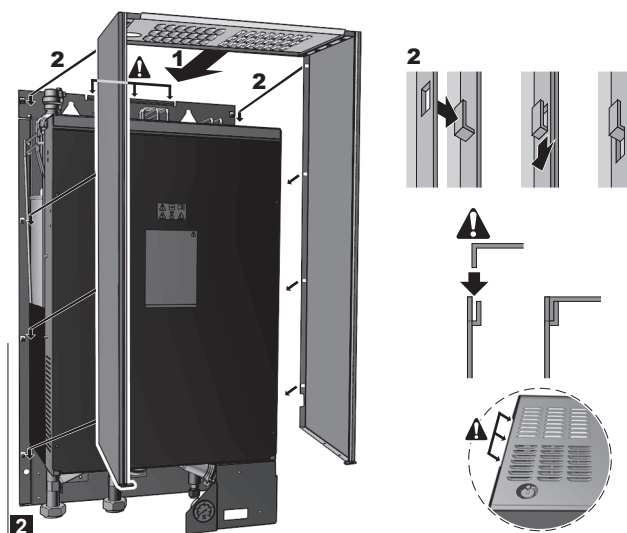
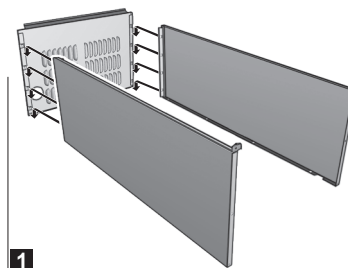


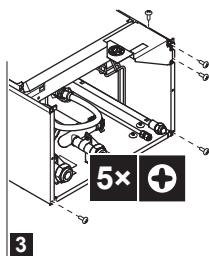
- 5 Tilt the top of the unit against the wall at the position of the 2 inserted screws.

- 6 Hook the unit against the wall.



- 7 Assemble the unit.





4.2.2 To install the drain pan kit

If a drain pan kit (EKHBDPCA2) is required, install it before connecting the refrigerant and water pipes and the electrical wiring.

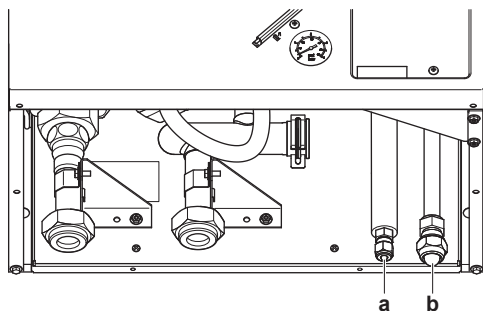
To install, see the installation manual of the drain pan kit.

4.3 Connecting the refrigerant piping

See the outdoor unit installation manual for all guidelines, specifications and installation instructions.

4.3.1 To connect the refrigerant piping to the indoor unit

- 1 Connect the liquid stop valve from the outdoor unit to the refrigerant liquid connection of the indoor unit.



- a Refrigerant liquid connection
- b Refrigerant gas connection

- 2 Connect the gas stop valve from the outdoor unit to the refrigerant gas connection of the indoor unit.

4.4 Connecting the water piping

4.4.1 To connect the water piping

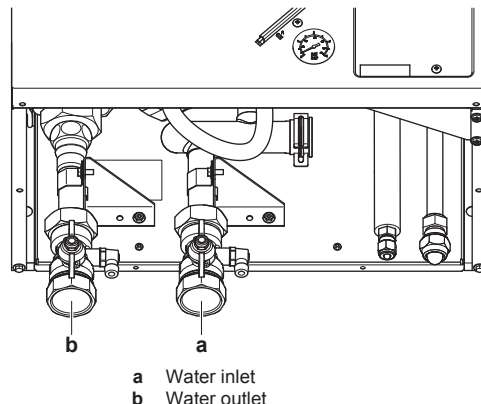


NOTICE

Do NOT use excessive force when connecting the piping. Deformation of the piping can cause malfunctioning of the unit.

To facilitate service and maintenance, 2 shut-off valves are provided. Mount the valves on the water inlet and on the water outlet. Mind their position. Orientation of the integrated drain valves is important for servicing.

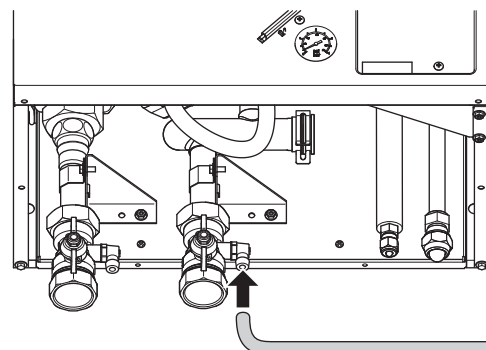
- 1 Install the shut-off valves on the water pipes.



- 2 Screw the indoor unit nuts on the shut-off valves.
- 3 Connect the field piping on the shut-off valves.
- 4 In case of connection with the optional domestic hot water tank, see the installation manual of the domestic hot water tank.

4.4.2 To fill the water circuit

- 1 Connect the water supply hose to the drain and fill valve.



- 2 Open the drain and fill valve.
- 3 Make sure that the automatic air purge valve is open (at least 2 turns).



INFORMATION

For location of the air purge valve, see "Components: Indoor unit" in the installer reference guide.

- 4 Fill the circuit with water until the manometer indicates a pressure of ± 2.0 bar.
- 5 Purge as much air as possible from the water circuit.
- 6 Close the drain and fill valve.
- 7 Disconnect the water supply hose from the drain and fill valve.

4 Installation

4.4.3 To fill the domestic hot water tank

For installation instructions, see the installation manual of the domestic hot water tank.

4.4.4 To insulate the water piping

The piping in the complete water circuit MUST be insulated to prevent condensation during cooling operation and reduction of the heating and cooling capacity.

If the temperature is higher than 30°C and the humidity is higher than RH 80%, the thickness of the sealing materials should be at least 20 mm to prevent condensation on the surface of the sealing.

4.5 Connecting the electrical wiring



DANGER: RISK OF ELECTROCUTION



WARNING

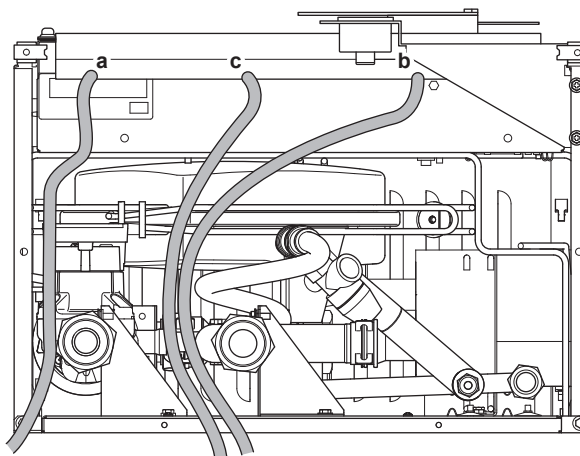
ALWAYS use multicore cable for power supply cables.

4.5.1 About electrical compliance

See "4.5.4 To connect the backup heater power supply" on page 9

4.5.2 To connect the electrical wiring on the indoor unit

- 1 To open the indoor unit, see "4.1.1 To open the indoor unit" on page 5.
- 2 Wiring should enter the unit from the bottom.
- 3 Routing of the wiring inside the unit should be as follows:



INFORMATION

When installing field supply or option cables, foresee sufficient cable length. This will make it possible to remove/reposition the switch box and gain access to other components during service.

Routing	Possible cables (depending on unit type and installed options)
a Low voltage	<ul style="list-style-type: none"> • User interface • Domestic hot water tank thermistor (option) • Power consumption digital inputs (field supply) • Outdoor ambient temperature sensor (option) • Indoor ambient temperature sensor (option) • Electrical meters (field supply)
b High voltage power supply	<ul style="list-style-type: none"> • Interconnection cable • Normal kWh rate power supply • Preferential kWh rate power supply • Power supply for backup heater • Power supply for bottom plate heater (option) • Power supply for booster heater (to indoor unit) • Power supply for booster heater and thermal protection (from indoor unit)
c High voltage control signal	<ul style="list-style-type: none"> • Preferential power supply contact • Heat pump convector (option) • Room thermostat (option) • 3-way valve • Shut-off valve (field supply) • Domestic hot water pump (field supply) • Alarm output • Changeover to external heat source control • Space heat/cool operation control

- 4 Fix the cable with cable ties to the cable tie mountings to ensure strain relief and to make sure that it does NOT come in contact with the piping and sharp edges.



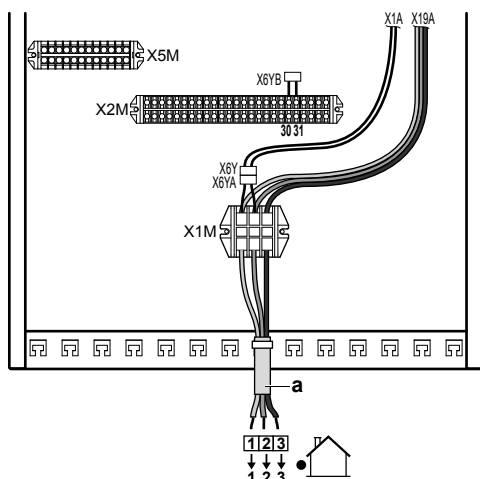
CAUTION

Do NOT push or place redundant cable length in the unit.

4.5.3 To connect the main power supply

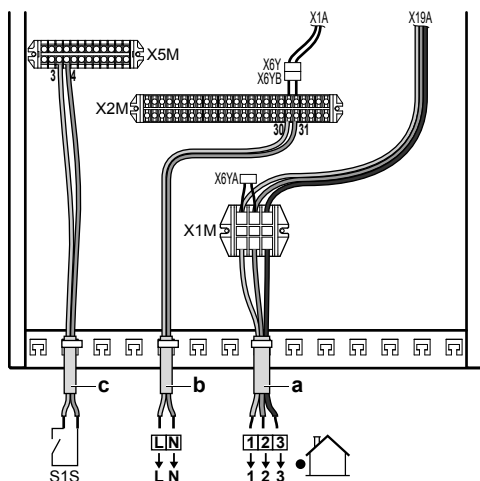
- 1 Connect the main power supply.

In case of normal kWh rate power supply



Legend: see illustration below.

In case of preferential kWh rate power supply



- a Interconnection cable (=main power supply)
- b Normal kWh rate power supply
- c Preferential power supply contact

- 2 Fix the cable with cable ties to the cable tie mountings.



INFORMATION

In case of preferential kWh rate power supply, the necessity of separate normal kWh rate power supply to indoor unit (b) X2M30/31 depends on the type of preferential kWh rate power supply.

Separate connection to the indoor unit is required:

- if preferential kWh rate power supply is interrupted when active, OR
- if no power consumption of the indoor unit is allowed at the preferential kWh rate power supply when active.

4.5.4 To connect the backup heater power supply



CAUTION

To guarantee the unit is completely earthed, always connect the backup heater power supply and the earth cable.



CAUTION

If the indoor unit has a tank with a built-in electrical booster heater (EKHW), use a dedicated power circuit for the backup heater and booster heater. NEVER use a power circuit shared by another appliance. This power circuit must be protected with the required safety devices according to the applicable legislation.



CAUTION

To guarantee the unit is completely earthed, always connect the backup heater power supply and the earth cable.

The backup heater capacity can vary, depending on the indoor unit model. Make sure that the power supply is in accordance with the backup heater capacity, as listed in the table below.

Backup heater type	Backup heater capacity	Power supply	Maximum running current	$Z_{max}(\Omega)$
*3V	3 kW	1~ 230 V	13 A	—
*9W	3 kW	1~ 230 V	13 A	—
	6 kW	1~ 230 V	26 A ^{(a)/(b)}	—
	6 kW	3~ 230 V	15 A	—
	6 kW	3N~ 400 V	8.6 A	—
	9 kW	3N~ 400 V	13 A	—

- (a) Equipment complying with EN/IEC 61000-3-12 (European/ International Technical Standard setting the limits for harmonic currents produced by equipment connected to public low-voltage systems with input current >16 A and ≤75 A per phase.).
- (b) This equipment complies with EN/IEC 61000-3-11 (European/International Technical Standard setting the limits for voltage changes, voltage fluctuations and flicker in public low-voltage supply systems for equipment with rated current ≤75 A) provided that the system impedance Z_{sys} is less than or equal to Z_{max} at the interface point between the user's supply and the public system. It is the responsibility of the installer or user of the equipment to ensure, by consultation with the distribution network operator if necessary, that the equipment is connected only to a supply with a system impedance Z_{sys} less than or equal to Z_{max} .

- 1 Connect the backup heater power supply. For *3V models, a double-pole fuse is used for F1B. For *9W models, a 4-pole fuse is used for F1B.

- 2 If required, modify the connections on terminals X6M and X7M.

Backup heater type	Connections to backup heater power supply	Connections to terminals
3 kW 1~ 230 V (*3V)		—

4 Installation

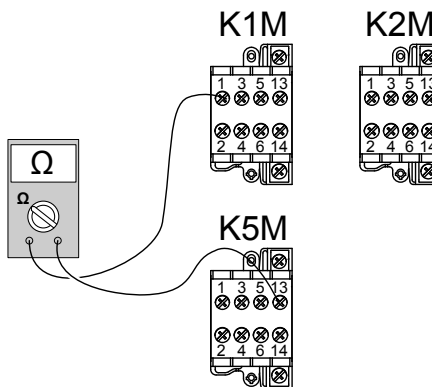
Backup heater type	Connections to backup heater power supply	Connections to terminals
3 kW 1~ 230 V (*9W)		
6 kW 1~ 230 V (*9W)		
6 kW 3~ 230 V (*9W)		
6 kW 3N~ 400 V (*9W)		
9 kW 3N~ 400 V (*9W)		

- 3 Fix the cable with cable ties to the cable tie mountings.
- 4 Configure the user interface for the respective power supply.
See ["5.2.2 Quick wizard: Standard" on page 14](#).

During connection of the backup heater, miswiring is possible. To detect possible miswiring, it is highly recommended to measure the resistance value of the heater elements. Depending on the different backup heater types, following resistance values (see table below) should be measured. ALWAYS measure the resistance on the contactor clamps K1M, K2M, and K5M.

		3 kW 1~ 230 V	6 kW 1~ 230 V	6 kW 3~ 230 V	6 kW 3N~ 400 V	9 kW 3N~ 400 V
K1M/1	K5M/13	52.9Ω	52.9Ω	52.9Ω	∞	∞
	K1M/3	∞	∞	∞	105.8Ω	105.8Ω
	K1M/5	∞	∞	∞	105.8Ω	105.8Ω
K1M/3	K1M/5	26.5Ω	26.5Ω	26.5Ω	105.8Ω	105.8Ω
K2M/1	K5M/13	∞	26.5Ω	26.5Ω	∞	∞
	K2M/3	∞	∞	∞	52.9Ω	52.9Ω
	K2M/5	∞	∞	∞	52.9Ω	52.9Ω
K2M/3	K2M/5	52.9Ω	52.9Ω	52.9Ω	52.9Ω	52.9Ω
K1M/5	K2M/1	∞	∞	∞	∞	∞

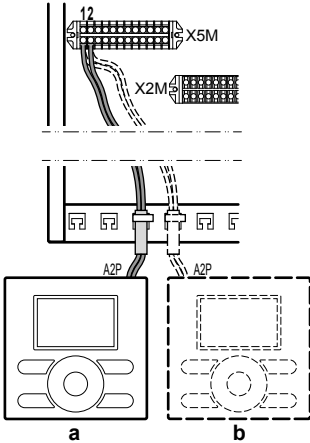

Example measure resistance between K1M/1 and K5M/13:

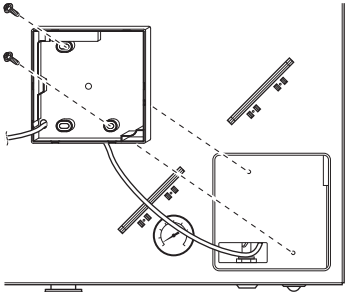


4.5.5 To connect the user interface

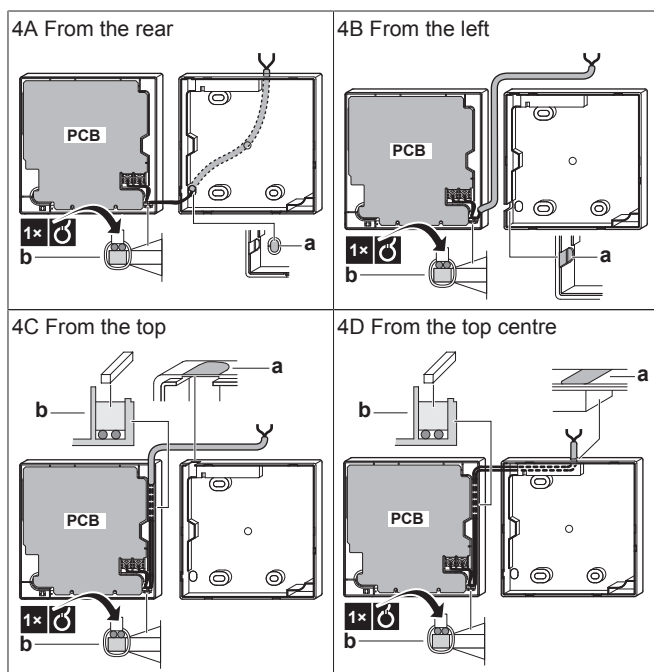
- If you use 1 user interface, you can install it at the indoor unit (for control close to the indoor unit), or in the room (when used as room thermostat).
- If you use 2 user interfaces, you can install 1 user interface at the indoor unit (for control close to the indoor unit) + 1 user interface in the room (used as room thermostat).

The procedure differs slightly depending on where you install the user interface.

#	At the indoor unit	In the room
1	<p>Connect the user interface cable to the indoor unit.</p> <p>Fix the cable with cable ties to the cable tie mountings.</p>  <p>a Main user interface^(a)</p> <p>b Optional user interface</p>	
2	<p>Insert a screwdriver into the slots underneath the user interface and carefully separate the faceplate from the wallplate.</p> <p>The PCB is mounted in the faceplate of the user interface. Be careful NOT to damage it.</p> 	

#	At the indoor unit	In the room
3	Fix the wallplate of the user interface to the frontplate of the unit. Be careful NOT to distort the shape of the backside of the user interface by overtightening the mounting screws. 	Fix the wallplate of the user interface to the wall.
4	Connect as shown in 4A.	Connect as shown in 4A, 4B, 4C or 4D.
5	Reinstall the faceplate onto the wallplate. Be careful NOT to pinch the wiring when attaching the frontplate to the unit.	

(a) The main user interface is required for operation, but has to be ordered separately (mandatory option).



- a Notch this part for the wiring to pass through with nippers etc.
- b Secure the wiring to the front part of the casing using the wiring retainer and clamp.

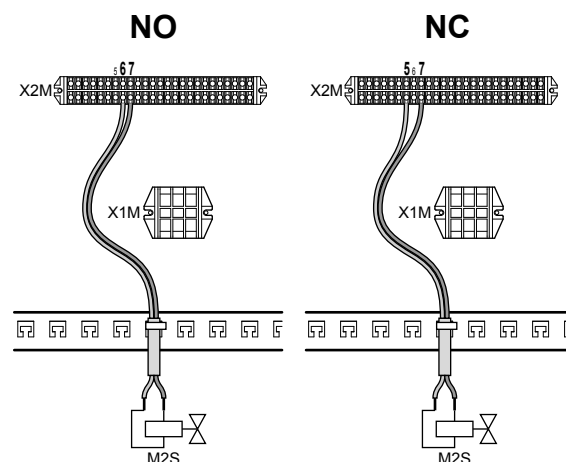
4.5.6 To connect the shut-off valve

- 1 Connect the valve control cable to the appropriate terminals as shown in the illustration below.



NOTICE

Wiring is different for a NC (normal closed) valve and a NO (normal open) valve.



- 2 Fix the cable with cable ties to the cable tie mountings.

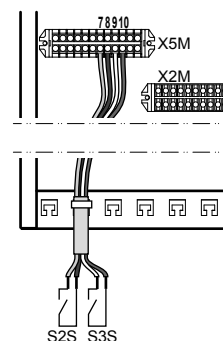
4.5.7 To connect the electrical meters



INFORMATION

In case of an electrical meter with transistor output, check the polarity. The positive polarity MUST be connected to X5M/7 and X5M/9; the negative polarity to X5M/8 and X5M/10.

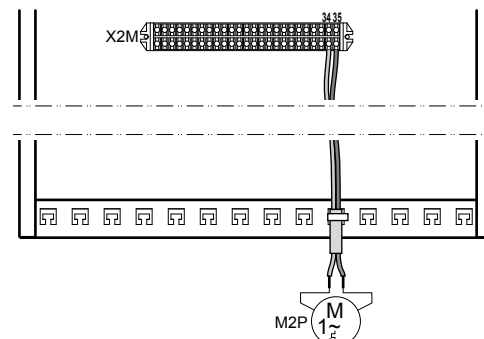
- 1 Connect the electrical meters cable to the appropriate terminals as shown in the illustration below.



- 2 Fix the cable with cable ties to the cable tie mountings.

4.5.8 To connect the domestic hot water pump

- 1 Connect the domestic hot water pump cable to the appropriate terminals as shown in the illustration below.

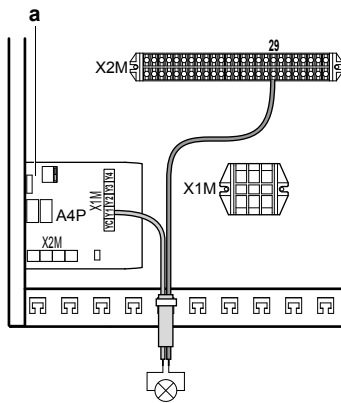


- 2 Fix the cable with cable ties to the cable tie mountings.

4 Installation

4.5.9 To connect the alarm output

- 1 Connect the alarm output cable to the appropriate terminals as shown in the illustration below.

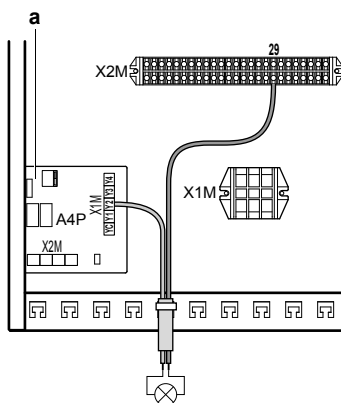


a Installation of EKR1HB is required.

- 2 Fix the cable with cable ties to the cable tie mountings.

4.5.10 To connect the space cooling/heating ON/OFF output

- 1 Connect the space cooling/heating ON/OFF output cable to the appropriate terminals as shown in the illustration below.

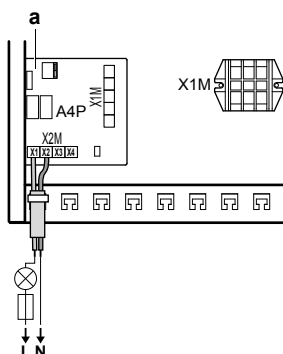


a Installation of EKR1HB is required.

- 2 Fix the cable with cable ties to the cable tie mountings.

4.5.11 To connect the changeover to external heat source

- 1 Connect the changeover to external heat source cable to the appropriate terminals as shown in the illustration below.

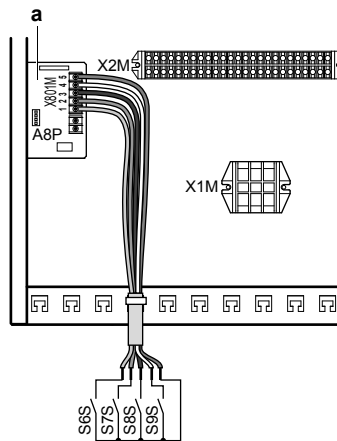


a Installation of EKR1HB is required.

- 2 Fix the cable with cable ties to the cable tie mountings.

4.5.12 To connect the power consumption digital inputs

- 1 Connect the power consumption digital inputs cable to the appropriate terminals as shown in the illustration below.



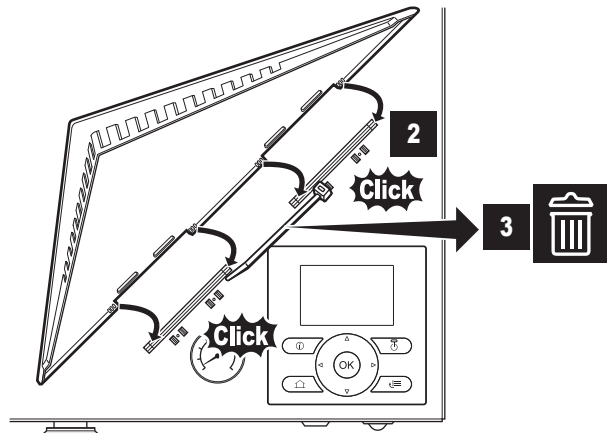
a Installation of EKR1AHTA is required.

- 2 Fix the cable with cable ties to the cable tie mountings.

4.6 Finishing the indoor unit installation

4.6.1 To fix the user interface cover to the indoor unit

- 1 Make sure that the front panel is removed from the indoor unit. See "4.1.1 To open the indoor unit" on page 5.
- 2 Plug the user interface cover into the hinges.



- 3 Mount the front panel to the indoor unit.

4.6.2 To close the indoor unit

- 1 Close the switch box cover.
- 2 Reinstall the front panel.



NOTICE

When closing the indoor unit cover, make sure that the tightening torque does NOT exceed 4.1 N•m.

5 Configuration

5.1 Overview: Configuration

This chapter describes what you have to do and know to configure the system after it is installed.



NOTICE

The explanation about the configuration in this chapter gives you ONLY basic explanations. For more detailed explanation and background information, see the installer reference guide.

Why

If you do NOT configure the system correctly, it might NOT work as expected. The configuration influences the following:

- The calculations of the software
- What you can see on and do with the user interface

How

You can configure the system via the user interface.

- **First time – Quick wizard.** When you turn ON the user interface for the first time (via the indoor unit), a quick wizard starts to help you configure the system.
- **Afterwards.** If necessary, you can make changes to the configuration afterwards.



INFORMATION

When the installer settings are changed, the user interface will request to confirm. When confirmed, the screen will shortly turn OFF and "busy" will be displayed for several seconds.

Accessing settings – Legend for tables

You can access the installer settings using two different methods. However, NOT all settings are accessible via both methods. If so, the corresponding table columns in this chapter are set to N/A (not applicable).

Method	Column in tables
Accessing settings via the breadcrumb in the menu structure .	#
Accessing settings via the code in the overview settings .	Code

See also:

- ["To access the installer settings" on page 13](#)
- ["5.3 Menu structure: Overview installer settings" on page 18](#)

5.1.1 To access the most used commands

To access the installer settings

- 1 Set the user permission level to Installer.
- 2 Go to [A]: > Installer settings.

To access the overview settings

- 1 Set the user permission level to Installer.
- 2 Go to [A.8]: > Installer settings > Overview settings.

To set the user permission level to Installer

- 1 Set the user permission level to Adv. end user.
- 2 Go to [6.4]: > Information > User permission level.
- 3 Press for more than 4 seconds.

Result: is displayed on the home pages.

- 4 If you do NOT press any button for more than 1 hour or press again for more than 4 seconds, the installer permission level switches back to End user.

To set the user permission level to Advanced end user

- 1 Go to the main menu or any of its submenus: .
- 2 Press for more than 4 seconds.

Result: The user permission level switches to Adv. end user. Additional information is displayed and "+" is added to the menu title. The user permission level will stay in Adv. end user until set otherwise.

To set the user permission level to End user

- 1 Press for more than 4 seconds.

Result: The user permission level switches to End user. The user interface will return to the default home screen.

To modify an overview setting

Example: Modify [1-01] from 15 to 20.

- 1 Go to [A.8]: > Installer settings > Overview settings.
- 2 Go to the corresponding screen of the first part of the setting by using the and button.



INFORMATION

An additional 0-digit is added to the first part of the setting when you access the codes in the overview settings.

Example: [1-01]: "1" will result in "01".

Overview settings			
01			
00	01	15	02
04	05	06	07
08	09	0a	0b
0c	0d	0e	0f
OK Confirm Adjust Scroll			

- 3 Go to the corresponding second part of the setting by using the and button.

Overview settings			
01			
00	01	15	02
04	05	06	07
08	09	0a	0b
0c	0d	0e	0f
OK Confirm Adjust Scroll			

Result: The value to be modified is now highlighted.

- 4 Modify the value by using the and button.

Overview settings			
01			
00	01	20	02
04	05	06	07
08	09	0a	0b
0c	0d	0e	0f
OK Confirm Adjust Scroll			

- 5 Repeat previous steps if you have to modify other settings.
- 6 Push to confirm the modification of the parameter.
- 7 At installer settings menu, press to confirm the settings.

Installer settings	
The system will restart.	
OK Confirm Adjust	

Result: The system will restart.

5 Configuration

5.2 Basic configuration

5.2.1 Quick wizard: Language / time and date

#	Code	Description
[A.1]	N/A	Language
[1]	N/A	Time and date

5.2.2 Quick wizard: Standard

Backup heater configuration (only for *9W model)

#	Code	Description
[A.2.1.5]	[5-0D]	BUH type: <ul style="list-style-type: none"> 1 (1P,(1/1+2)): 6 kW 1~ 230 V (*9W) 3 (3P,(1/1+2)): 6 kW 3~ 230 V (*9W) 4 (3PN,(1/2)): 6 kW 3N~ 400 V (*9W) 5 (3PN,(1/1+2)): 9 kW 3N~ 400 V (*9W)

Backup heater relay setting

Relay setting	Backup heater operation	
	If backup heater step 1 is active:	If backup heater step 2 is active:
1/1+2	Relay 1 ON	Relays 1+2 ON
1/2	Relay 1 ON	Relay 2 ON

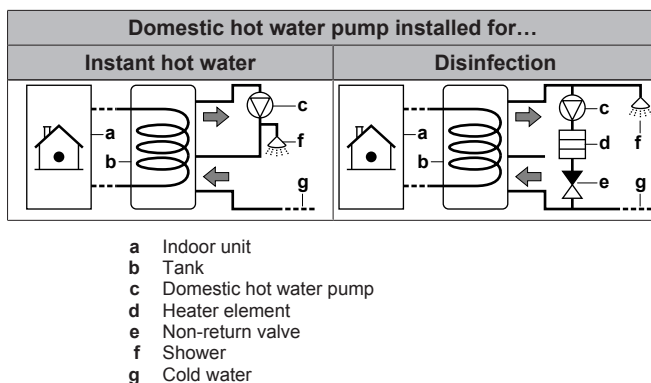
Space heating/cooling settings

#	Code	Description
[A.2.1.7]	[C-07]	Unit temperature control: <ul style="list-style-type: none"> 0 (LWT control): Unit operation is decided based on the leaving water temperature. 1 (Ext RT control): Unit operation is decided by the external thermostat. 2 (RT control): Unit operation is decided based on the ambient temperature of the user interface.
[A.2.1.B]	N/A	Only if there are 2 user interfaces: User interface location: <ul style="list-style-type: none"> At unit In room
[A.2.1.8]	[7-02]	Number of water temperature zones: <ul style="list-style-type: none"> 0 (1 LWT zone): Main 1 (2 LWT zones): Main + additional
[A.2.1.9]	[F-0D]	Pump operation: <ul style="list-style-type: none"> 0 (Continuous): Continuous pump operation, regardless of thermo ON or OFF condition. 1 (Sample): When thermo OFF condition occurs, the pump runs every 5 minutes and the water temperature is checked. If the water temperature is below target, unit operation can start. 2 (Request): Pump operation based on request. Example: Using a room thermostat and thermostat creates thermo ON/OFF condition.

5.2.3 Quick wizard: Options

Domestic hot water settings

#	Code	Description
[A.2.2.1]	[E-05]	DHW operation: Can the system prepare domestic hot water? <ul style="list-style-type: none"> 0 (No): NOT installed 1 (Yes): Installed
[A.2.2.3]	[E-07]	DHW tank type: <ul style="list-style-type: none"> 0 (Type 1): Tank with booster heater installed at the side of the tank. Default for EHBH/X. 1 (Type 2): Default for EHVH/X. The backup heater will also be used for domestic hot water heating. Range: 0~6. However, values 2~6 are not applicable for this setting. If the setting is set to 6, an error code will appear and the system will NOT operate.
[A.2.2.A]	[D-02]	Domestic hot water pump: <ul style="list-style-type: none"> 0 (No): NOT installed 1 (Secondary rtn): Installed for instant hot water 2 (Disinf. shunt): Installed for disinfection See also illustrations below.



INFORMATION

The correct domestic hot water default settings becomes only applicable when domestic hot water operation is activated ([E-05]=1).

Thermostats and external sensors



NOTICE

If an external room thermostat is used, the external room thermostat will control the room frost protection. However, the room frost protection is only possible if the leaving water temperature control on the unit's user interface is turned ON.

#	Code	Description
[A.2.2.4]	[C-05]	External room thermostat for the main zone: <ul style="list-style-type: none"> 1 (Thermo ON/OFF): When the used external room thermostat or heat pump convector can only send a thermo ON/OFF condition. No separation between heating or cooling demand. 2 (H/C request): When the used external room thermostat can send a separate heating/cooling thermo ON/OFF condition.
[A.2.2.5]	[C-06]	External room thermostat for the additional zone: <ul style="list-style-type: none"> 0: N/A 1 (Thermo ON/OFF): When the used external room thermostat or heat pump convector can only send a thermo ON/OFF condition. No separation between heating or cooling demand. 2 (H/C request): When the used external room thermostat can send a separate heating/cooling thermo ON/OFF condition.
[A.2.2.B]	[C-08]	External sensor: <ul style="list-style-type: none"> 0 (No): NOT installed. 1 (Outdoor sensor): Connected to PCB measuring the outdoor temperature. 2 (Room sensor): Connected to PCB measuring the indoor temperature.

Digital I/O PCB

#	Code	Description
[A.2.2.6.1]	[C-02]	External backup heater source: <ul style="list-style-type: none"> 0 (No): None 1 (Bivalent): Gas, oil boiler 2: N/A 3: N/A
[A.2.2.6.2]	[D-07]	Solar pump station kit: <ul style="list-style-type: none"> 0 (No): NOT installed 1 (Yes): Installed
[A.2.2.6.3]	[C-09]	Alarm output on optional EKR1HB PCB: <ul style="list-style-type: none"> 0 (Normally open): The alarm output will be powered when an alarm occurs. 1 (Normally closed): The alarm output will NOT be powered when an alarm occurs. This installer setting allows distinction between detection of an alarm and detection of a power failure to the unit. See also table below (Alarm output logic).
[A.2.2.6.4]	[F-04]	Bottom plate heater <ul style="list-style-type: none"> 0 (No): NOT installed 1 (Yes): Installed

Alarm output logic

[C-09]	Alarm	No alarm	No power supply to unit
0 (default)	Closed output	Open output	Open output
1	Open output	Closed output	

Demand PCB

#	Code	Description
[A.2.2.7]	[D-04]	Demand PCB Only applicable for EHBH/X04+08 and EHVH/X04+08. Indicates if the optional demand PCB is installed. <ul style="list-style-type: none"> 0 (No) 1 (Pwr consmp ctrl)

Energy metering

#	Code	Description
[A.2.2.8]	[D-08]	Optional external kWh meter 1: <ul style="list-style-type: none"> 0 (No): NOT installed 1: Installed (0.1 pulse/kWh) 2: Installed (1 pulse/kWh) 3: Installed (10 pulse/kWh) 4: Installed (100 pulse/kWh) 5: Installed (1000 pulse/kWh)
[A.2.2.9]	[D-09]	Optional external kWh meter 2: <ul style="list-style-type: none"> 0 (No): NOT installed 1: Installed (0.1 pulse/kWh) 2: Installed (1 pulse/kWh) 3: Installed (10 pulse/kWh) 4: Installed (100 pulse/kWh) 5: Installed (1000 pulse/kWh)

5.2.4 Quick wizard: Capacities (energy metering)

#	Code	Description
[A.2.3.1]	[6-02]	Booster heater capacity [kW]
[A.2.3.6]	[6-07]	Bottom plate heater capacity [W]

5.2.5 Space heating/cooling control

Leaving water temperature: Main zone

#	Code	Description
[A.3.1.1.1]	N/A	Set point mode: <ul style="list-style-type: none"> 0 (Fixed): Absolute 1 (Weather dep.): Weather-dependent 2 (Fixed/scheduled): Absolute + scheduled (only for leaving water temperature control) 3 (WD/scheduled): Weather-dependent + scheduled (only for leaving water temperature control)

5 Configuration

#	Code	Description
[7.7.1.1]	[1-00] [1-01] [1-02] [1-03]	Weather-dependent curve (heating): <ul style="list-style-type: none"> • T_t: Target leaving water temperature (main) • T_a: Outdoor temperature
[7.7.1.2]	[1-06] [1-07] [1-08] [1-09]	Weather-dependent curve (cooling): <ul style="list-style-type: none"> • T_t: Target leaving water temperature (main) • T_a: Outdoor temperature

Leaving water temperature: Additional zone

#	Code	Description
[A.3.1.2.1]	N/A	Set point mode: <ul style="list-style-type: none"> • 0 (Fixed): Absolute • 1 (Weather dep.): Weather-dependent • 2 (Fixed/scheduled): Absolute + scheduled (only for leaving water temperature control) • 3 (WD/scheduled): Weather-dependent + scheduled (only for leaving water temperature control)
[7.7.2.1]	[0-00] [0-01] [0-02] [0-03]	Weather-dependent curve (heating): <ul style="list-style-type: none"> • T_t: Target leaving water temperature (additional) • T_a: Outdoor temperature

#	Code	Description
[7.7.2.2]	[0-04] [0-05] [0-06] [0-07]	Weather-dependent curve (cooling): <ul style="list-style-type: none"> • T_t: Target leaving water temperature (additional) • T_a: Outdoor temperature

Leaving water temperature: Delta T source

#	Code	Description
[A.3.1.3.1]	[9-09]	Heating: required temperature difference between entering and leaving water. In case a minimum temperature difference is required for the good operation of the heat emitters in heating mode.
[A.3.1.3.2]	[9-0A]	Cooling: required temperature difference between entering and leaving water. In case a minimum temperature difference is required for the good operation of the heat emitters in cooling mode.

Leaving water temperature: Modulation

#	Code	Description
[A.3.1.1.5]	[8-05]	Leaving water temperature modulation: <ul style="list-style-type: none"> • 0 (No): Disabled • 1 (Yes): Enabled. The leaving water temperature is calculated according to the difference between desired and actual room temperature. This allows better matching of the heat pump capacity to actual required capacity and results in less start/stop cycles of the heat pump and more economic operation.

Leaving water temperature: Emitter type

#	Code	Description
[A.3.1.1.7]	[9-0B]	Reaction time of the system: <ul style="list-style-type: none"> • 0: Quick. Example: Small water volume and fan coils. • 1: Slow. Example: Large water volume, floor heating loops. Depending on the system water volume and the heat emitters type, the heat up or cool down of a space can take longer. This setting can compensate for a slow or a quick heating/cooling system by adjusting the unit capacity during the heat up/cool down cycle.

5.2.6 Domestic hot water control

#	Code	Description
[A.4.1]	[6-0D]	Domestic hot water Type: <ul style="list-style-type: none"> 0 (Reheat only): Only reheat operation is allowed. 1 (Reheat + sched.): Same as 2, but between the scheduled heatup cycles, reheat operation is allowed. 2 (Scheduled only): The domestic hot water tank can ONLY be heated according to a schedule.
[A.4.5]	[6-0E]	The maximum temperature that users can select for the domestic hot water. You can use this setting to limit the temperature at the hot water taps.



INFORMATION

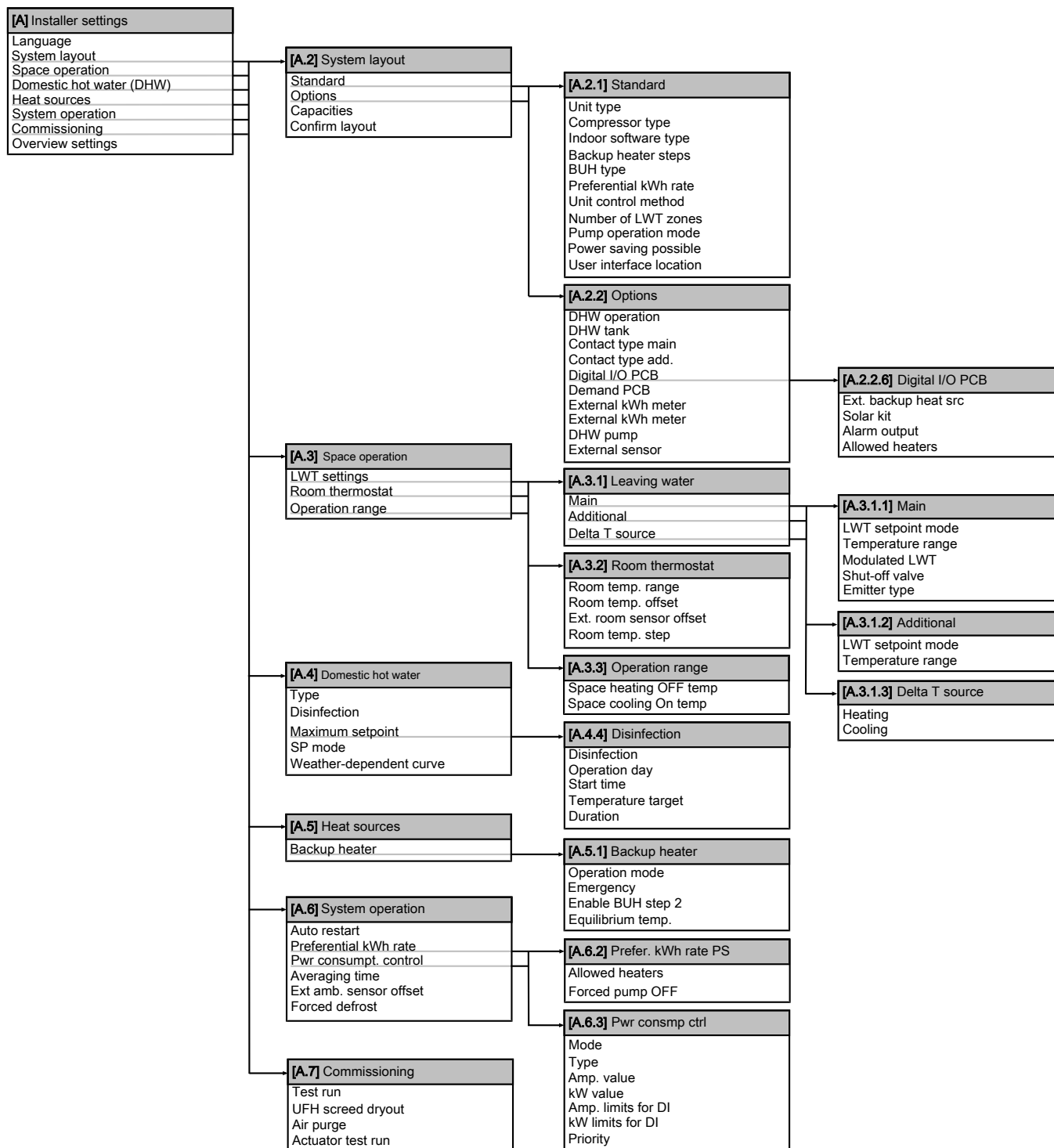
There is a risk of space heating (cooling) capacity shortage/comfort problem (in case of frequent domestic hot water operation, frequent and long space heating/cooling interruption will happen) when selecting [6-0D]=0 ([A.4.1] Domestic hot water Type=Reheat only) in case of a domestic hot water tank without an internal booster heater.

5.2.7 Contact/helpdesk number

#	Code	Description
[6.3.2]	N/A	Number that users can call in case of problems.

5 Configuration

5.3 Menu structure: Overview installer settings



INFORMATION

Depending on the selected installer settings, settings will be visible/invisible.

6 Commissioning



NOTICE

NEVER operate the unit without thermistors and/or pressure sensors/switches. Burning of the compressor might result.

6.1 Checklist before test run

Do NOT operate the system before the following checks are OK:

<input type="checkbox"/>	You read the complete installation instructions, as described in the installer reference guide .
<input type="checkbox"/>	The indoor unit is properly mounted.
<input type="checkbox"/>	The outdoor unit is properly mounted.
<input type="checkbox"/>	The following field wiring has been carried out according to this document and the applicable legislation: <ul style="list-style-type: none"> Between the local supply panel and the outdoor unit Between indoor unit and outdoor unit Between the local supply panel and the indoor unit Between the indoor unit and the valves (if applicable) Between the indoor unit and the room thermostat (if applicable) Between the indoor unit and the domestic hot water tank (if applicable) Between the gas boiler and the local supply panel (only applicable in case of hybrid system)
<input type="checkbox"/>	The system is properly earthed and the earth terminals are tightened.
<input type="checkbox"/>	The fuses or locally installed protection devices are installed according to this document, and have not been bypassed.
<input type="checkbox"/>	The power supply voltage matches the voltage on the identification label of the unit.
<input type="checkbox"/>	There are NO loose connections or damaged electrical components in the switch box.
<input type="checkbox"/>	There are NO damaged components or squeezed pipes on the inside of the indoor and outdoor units.
<input type="checkbox"/>	Depending on the backup heater type, backup heater circuit breaker F1B on the switch box is turned ON.
<input type="checkbox"/>	Only for tanks with built-in booster heater: The booster heater circuit breaker F2B on the switch box is turned ON.
<input type="checkbox"/>	There are NO refrigerant leaks .
<input type="checkbox"/>	The refrigerant pipes (gas and liquid) are thermally insulated.
<input type="checkbox"/>	The correct pipe size is installed and the pipes are properly insulated.
<input type="checkbox"/>	There is NO water leak inside the indoor unit.
<input type="checkbox"/>	The shut-off valves are properly installed and fully open.
<input type="checkbox"/>	The stop valves (gas and liquid) on the outdoor unit are fully open.
<input type="checkbox"/>	The air purge valve is open (at least 2 turns).
<input type="checkbox"/>	The pressure relief valve purges water when opened.



The **minimum water volume** is guaranteed in all conditions. See "To check the water volume" in "3.1 Preparing water piping" on page 4.

6.2 To perform an air purge

Prerequisite: Make sure the user interface shows the home screens and that the space heating and domestic hot water demands are turned off.

- 1 Go to [A.7.3]: > Installer settings > Commissioning > Air purge.
- 2 Set the type.
- 3 Select Start air purge and press **OK**.
- 4 Select OK and press **OK**.

Result: The air purge starts. It stops automatically when done. To stop it manually, press , select OK and press **OK**.

6.3 To perform a test run

Prerequisite: Make sure the user interface shows the home screens and that the space heating and domestic hot water demands are turned off.

- 1 Set the user permission level to Installer. See "To set the user permission level to Installer" on page 13.
- 2 Go to [A.7.1]: > Installer settings > Commissioning > Test run.
- 3 Select a test and press **OK**. **Example:** Heating.
- 4 Select OK and press **OK**.

Result: The test run starts. It stops automatically when done (± 30 min). To stop it manually, press , select OK and press **OK**.



INFORMATION

If 2 user interfaces are present, you can start a test run from both user interfaces.

- The user interface used to start the test run displays a status screen.
- The other user interface displays a "busy" screen. You cannot use the user interface as long as the "busy" screen is shown.

6.4 To perform an actuator test run

Prerequisite: Make sure the user interface shows the home screens and that the space heating and domestic hot water demands are turned off.

- 1 Set the user permission level to Installer. See "To set the user permission level to Installer" on page 13.
- 2 Make sure the room temperature control, the leaving water temperature control and the domestic hot water control are turned OFF via the user interface.
- 3 Go to [A.7.4]: > Installer settings > Commissioning > Actuator test run.
- 4 Select an actuator and press **OK**. **Example:** Pump.
- 5 Select OK and press **OK**.

Result: The actuator test run starts. It automatically stops when finished. To stop it manually, press , select OK and press **OK**.

7 Hand-over to the user

6.4.1 Possible actuator test runs

- Booster heater test
- Backup heater (step 1) test
- Backup heater (step 2) test
- Pump test



INFORMATION

Make sure that all air is purged before executing the test run. Also avoid disturbances in the water circuit during the test run.

- Solar pump test
- 2-way valve test
- 3-way valve test
- Bottom plate heater test
- Bivalent signal test
- Alarm output test
- Cooling/heating signal test
- Quick heat-up test
- Circulation pump test

6.5 Checklist before leaving the installation site



The **minimum flow rate** during backup heater/defrost operation is guaranteed in all conditions. See "To check the water volume and flow rate" in ["3.1 Preparing water piping" on page 4](#).

Recommended procedure

- 1 Confirm according to the hydraulic configuration which space heating loops can be closed due to mechanical, electronic, or other valves.
- 2 Close all space heating loops that can be closed (see previous step).
- 3 Start the pump test run operation (see ["6.4 To perform an actuator test run" on page 19](#)).
- 4 Go to [6.1.8]: > Information > Sensor information > Flow rate to check the flow rate. During pump test run operation, the unit can operate below this minimum required flow rate during defrost/backup heater operation.

Bypass valve foreseen?	
Yes	No
Modify the bypass valve setting to reach the minimum required flow rate + 2 l/min	In case the actual flow rate is below the minimum flow rate (required during defrost/backup heater operation), modifications at hydraulic configuration are required. Increase the space heating loops that can NOT be closed or install a pressure controlled bypass valve.

6.6 To perform an underfloor heating screed dryout

Prerequisite: Make sure there is ONLY 1 user interface connected to your system to perform an underfloor heating screed dryout.

Prerequisite: Make sure the user interface shows the home screens and that the space heating and domestic hot water demands are turned off.

- 1 Go to [A.7.2]: > Installer settings > Commissioning > UFH screed dryout.
- 2 Set a dryout program.
- 3 Select Start dryout and press **OK**.
- 4 Select OK and press **OK**.

Result: The underfloor heating screed dryout starts. It stops automatically when done. To stop it manually, press , select OK and press **OK**.

7 Hand-over to the user

Once the test run is finished and the unit operates properly, please make sure the following is clear for the user:

- Fill in the installer setting table (in the operation manual) with the actual settings.
- Make sure that the user has the printed documentation and ask him/her to keep it for future reference. Inform the user that he can find the complete documentation on the url as earlier described in this manual.
- Explain the user how to properly operate the system and what he/she has to do in case of problems.
- Show the user what he/she has to do in relation to maintaining the unit.
- Explain the user about energy saving tips as described in the operation manual.

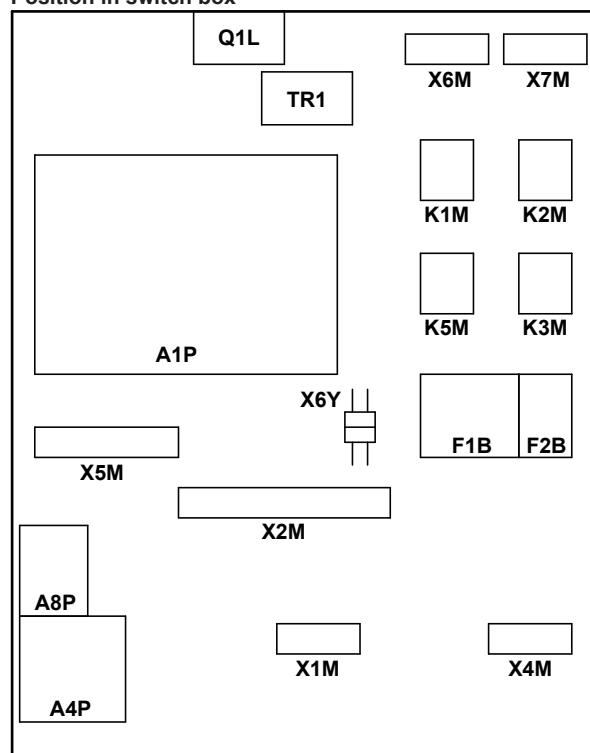
8 Technical data

8.1 Wiring diagram

8.1.1 Wiring diagram: Indoor unit

See the internal wiring diagram supplied with the unit (on the inside of the indoor unit switch box cover). The abbreviations used are listed below.

Position in switch box



Backup heater configuration (only for *9W):

- ☐ 3V3 (1N~, 230 V, 3 kW)
- ☐ 6V3 (1N~, 230 V, 6 kW)
- ☐ 6WN (3N~, 400 V, 6 kW)
- ☐ 9WN (3N~, 400 V, 9 kW)
- ☐ 6T1 (3~, 230 V, 6 kW)

User installed options:

- ☐ Bottom plate heater
- ☐ Domestic hot water tank
- ☐ Domestic hot water tank with solar connection
- ☐ Remote user interface
- ☐ External indoor thermistor
- ☐ External outdoor thermistor
- ☐ Digital I/O PCB
- ☐ Demand PCB
- ☐ Solar pump and control station

Main leaving water temperature:

- ☐ On/OFF thermostat (wired)
- ☐ On/OFF thermostat (wireless)
- ☐ External thermistor on On/OFF thermostat (wireless)
- ☐ Heat pump convector

Additional leaving water temperature:

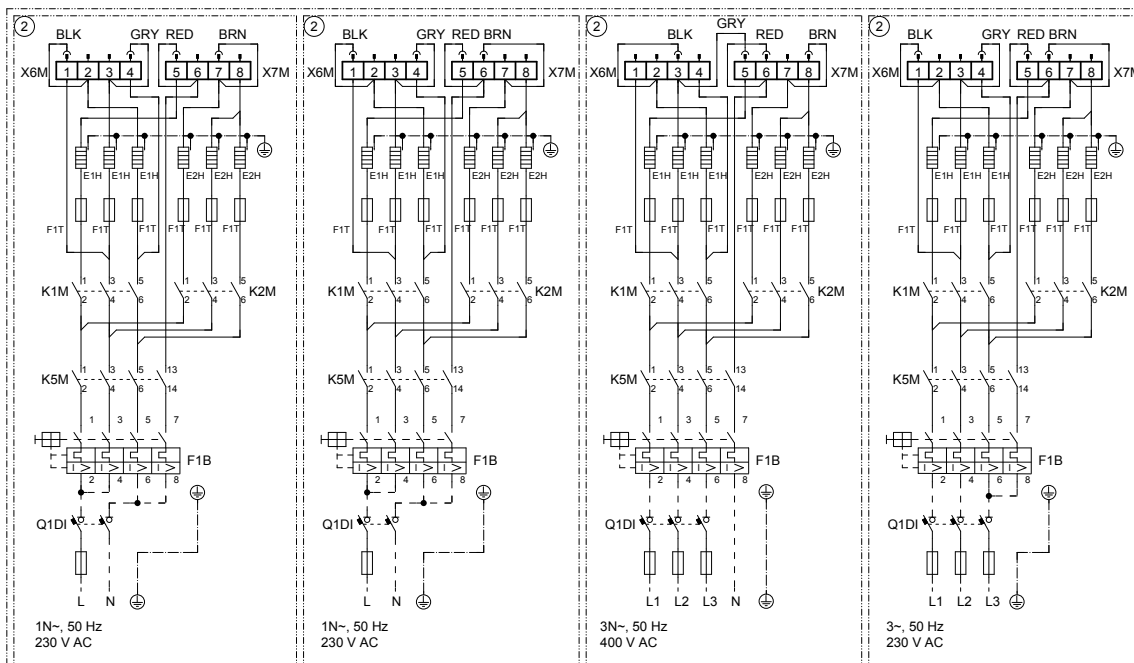
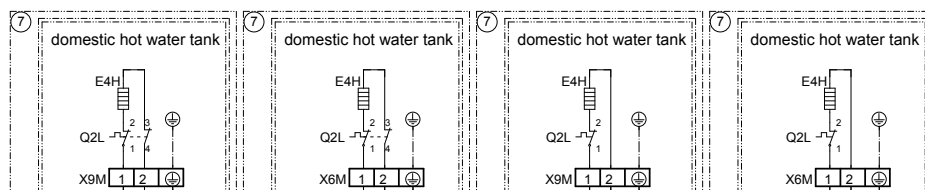
- ☐ On/OFF thermostat (wired)
- ☐ On/OFF thermostat (wireless)
- ☐ External thermistor on On/OFF thermostat (wireless)
- ☐ Heat pump convector

only for *KHWE*Z2

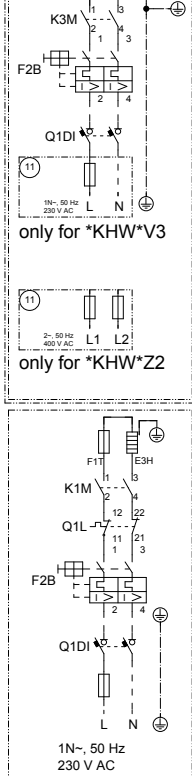
only for *KHWS*Z2

only for *KHWE*V3

only for *KHWS*V3

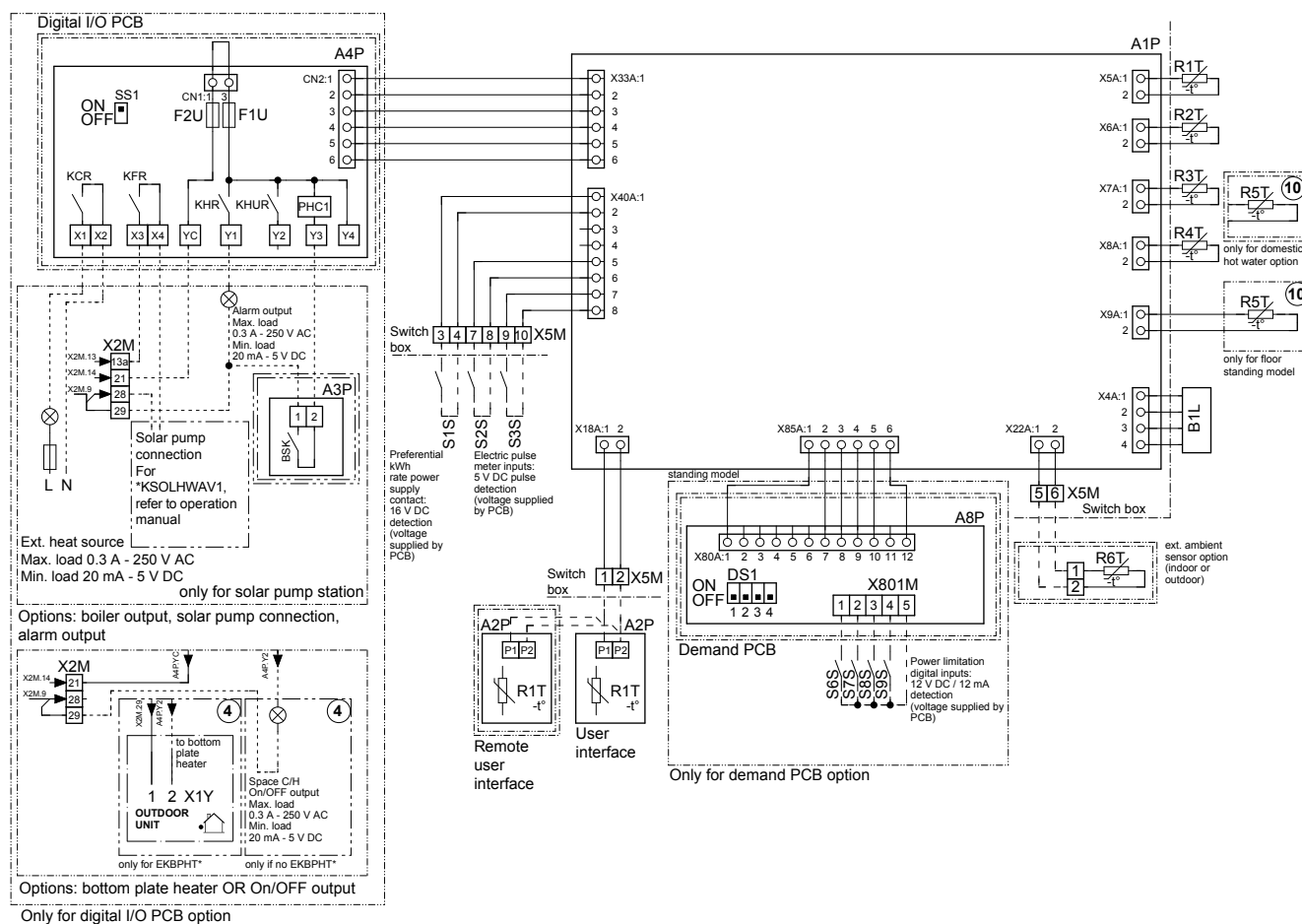


only for *9W



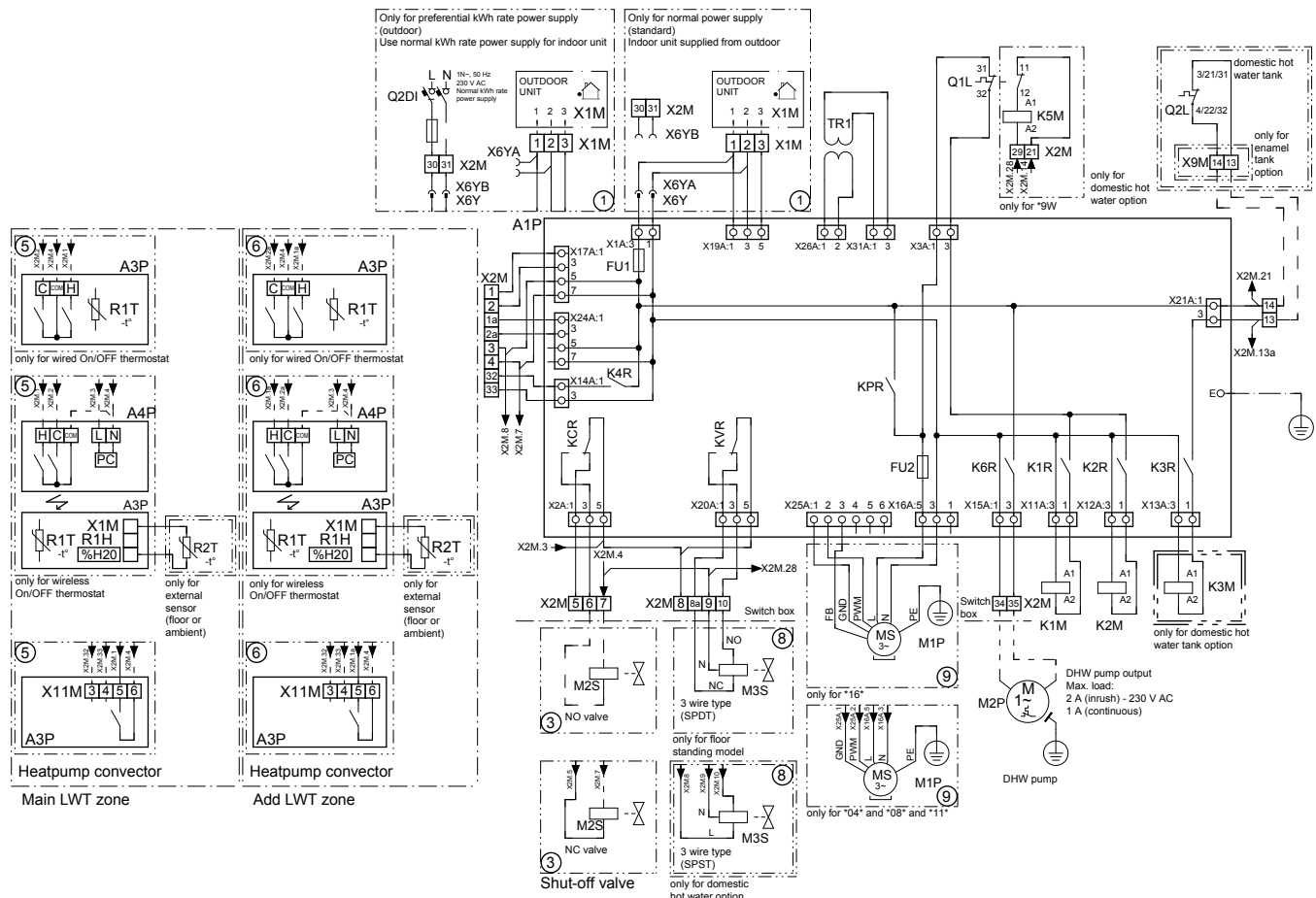
only for *3V

4D090419 page 4



4D090419 page 5

8 Technical data



4D090419 page 6

A1P	Main PCB	M1P	Main supply pump
A2P	User interface PCB	M2P	# Domestic hot water pump
A3P	* Solar pump station PCB	M2S	# 2-way valve for cooling mode
A3P	* On/OFF thermostat (PC=power circuit)	M3S	(*) 3-way valve for floor heating/domestic hot water
A3P	* Heat pump convector		
A4P	* Digital I/O PCB	Q1DI, Q2DI	# Earth leakage circuit breaker
A4P	* Receiver PCB (Wireless On/OFF thermostat)	Q1L	Thermal protector backup heater
A8P	* Demand PCB	Q2L	* Thermal protector booster heater
B1L	Flow sensor	R1T	Outlet water heat exchanger thermistor
BSK	* Solar pump station relay	R1T (A2P)	Ambient sensor user interface
DS1(A8P)	* DIP switch	R1T (A3P)	* Ambient sensor On/OFF thermostat
E1H	Backup heater element (1 kW)	R2T	Outlet backup heater thermistor
E2H	Backup heater element (2 kW)	R2T	* External sensor (floor or ambient)
E3H	Backup heater element (3 kW)	R3T	Refrigerant liquid side thermistor
E4H	* Booster heater (3 kW)	R4T	Inlet water thermistor
F1B	Overcurrent fuse backup heater	R5T	(*) Domestic hot water thermistor
F2B	* Overcurrent fuse booster heater	R6T	* External indoor or outdoor ambient thermistor
F1T	Thermal fuse backup heater	R1H (A3P)	* Humidity sensor
F1U, F2U	* Fuse 5 A 250 V for digital I/O PCB	S1S	# Preferential kWh rate power supply contact
PHC1	* Optocoupler input circuit	S2S	# Electrical meter pulse input 1
K1M, K2M	Contactor backup heater	S3S	# Electrical meter pulse input 2
K3M	* Contactor booster heater	S6S~S9S	# Digital power limitation inputs
K5M	Safety contactor backup heater (only for *9W)	SS1 (A4P)	* Selector switch
K*R	Relay on PCB	TR1	Power supply transformer
		X*M	Terminal strip
		X*Y	Connector

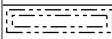
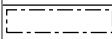
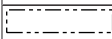
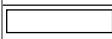
* = Optional

(*) = Standard for EHVH/X, optional for EHBH/X

= Field supply

BLK Black
BRN Brown
GRY Grey
RED Red

Notes to go through before starting the unit

English	Translation
X1M	Main terminal
X2M	Field wiring terminal for AC
X5M	Field wiring terminal for DC
X6M, X7M	Backup heater terminal
X4M	Booster heater terminal
-----	Earth wiring
15	Wire number 15
-----	Field supply
→ **/12.2	Connection ** continues on page 12 column 2
①	Several wiring possibilities
	Option
	Not mounted in switch box
	Wiring depending on model
	PCB

8 Technical data

Electrical connection diagram

For more details, please check the unit wiring.

Power supply

STANDARD PART

① Only for normal power supply installation

unit power supply: 400 V or 230 V + earth
5 or 3 core

① Only for preferential kWh rate power supply installation
unit preferential kWh rate power supply:
400 V or 230 V + earth
5 or 3 core

normal kWh rate power supply for indoor unit: 230 V
3 core

Preferential kWh rate power supply contact
2 core
2x0.75

backup heater power supply (3/6/9 kW): 400 V or 230 V + earth

Optional parts (*KHW*)

② booster heater power supply (3 kW): 230 V + earth
3 core

4 or 3 core

3 core

2 core
230 V

5 core
5Gx2.5
230 V

signal

2 core
230 V

2 core
230 V

2 core
230 V

2 core
230 V

2 core
230 V

2 core
230 V

2 core
230 V

2 core
230 V

2 core
230 V

2 core
230 V

2 core
230 V

2 core
230 V

2 core
230 V

2 core
230 V

2 core
230 V

2 core
230 V

2 core
230 V

2 core
230 V

2 core
230 V

2 core
230 V

2 core
230 V

2 core
230 V

2 core
230 V

2 core
230 V

2 core
230 V

2 core
230 V

2 core
230 V

2 core
230 V

2 core
230 V

2 core
230 V

2 core
230 V

2 core
230 V

2 core
230 V

2 core
230 V

2 core
230 V

2 core
230 V

2 core
230 V

2 core
230 V

2 core
230 V

2 core
230 V

2 core
230 V

2 core
230 V

2 core
230 V

2 core
230 V

2 core
230 V

2 core
230 V

2 core
230 V

2 core
230 V

2 core
230 V

2 core
230 V

2 core
230 V

2 core
230 V

2 core
230 V

2 core
230 V

2 core
230 V

2 core
230 V

2 core
230 V

2 core
230 V

2 core
230 V

2 core
230 V

2 core
230 V

2 core
230 V

2 core
230 V

2 core
230 V

2 core
230 V

2 core
230 V

2 core
230 V

2 core
230 V

OUTDOOR UNIT

X1M: L1-L2-L3-N-earth
or L-N-earth

Bottom plate heater

X1Y: 1-2
Only for *KBPH*
& depending on model

X1M: 1-2-3

3 core

2 core
2x0.75

INDOOR UNIT

X1M: 1-2-3

X2M: 30-31

X5M: 3-4

F1B: L1-L2-L3
or L-N + earth

F2B: L-N + earth

X7M: F2B

Only for *KHWSU*V3

X4M: 1-2-earth

X2M: 13-14

X9A (PCB A1P)

A4P: X4
X2M: 28

Only for *KSOLHWAV1

SPST:
X2M: 8-9-10

Only for *KRP1AHTA

A8P: X801M: 1-5

A8P: X801M: 2-5

A8P: X801M: 3-5

A8P: X801M: 4-5

main: X2M: 1-2-4
add: X2M: 1a-2a-4

main: X2M: 1-2-3-4
add: X2M: 1a-2a-3-4

main: X2M: 1-4
add: X2M: 1a-4

X2M: 32-33

X5M: 1-2

2 core
2x0.75
communication

2 core
2x0.75
communication

2 core
2x0.75
communication

2 core
2x0.75
communication

2 core
2x0.75
communication

2 core
2x0.75
communication

2 core
2x0.75
communication

2 core
2x0.75
communication

2 core
2x0.75
communication

2 core
2x0.75
communication

2 core
2x0.75
communication

2 core
2x0.75
communication

2 core
2x0.75
communication

2 core
2x0.75
communication

2 core
2x0.75
communication

2 core
2x0.75
communication

2 core
2x0.75
communication

2 core
2x0.75
communication

2 core
2x0.75
communication

2 core
2x0.75
communication

2 core
2x0.75
communication

2 core
2x0.75
communication

2 core
2x0.75
communication

2 core
2x0.75
communication

2 core
2x0.75
communication

2 core
2x0.75
communication

2 core
2x0.75
communication

2 core
2x0.75
communication

2 core
2x0.75
communication

2 core
2x0.75
communication

2 core
2x0.75
communication

2 core
2x0.75
communication

2 core
2x0.75
communication

2 core
2x0.75
communication

2 core
2x0.75
communication

2 core
2x0.75
communication

2 core
2x0.75
communication

2 core
2x0.75
communication

2 core
2x0.75
communication

2 core
2x0.75
communication

2 core
2x0.75
communication

2 core
2x0.75
communication

2 core
2x0.75
communication

2 core
2x0.75
communication

2 core
2x0.75
communication

2 core
2x0.75
communication

2 core
2x0.75
communication

2 core
2x0.75
communication

2 core
2x0.75
communication

2 core
2x0.75
communication

2 core
2x0.75
communication

2 core
2x0.75
communication

2 core
2x0.75
communication

2 core
2x0.75
communication

2 core
2x0.75
communication

2 core
2x0.75
communication

Notes:

- In case of signal cable: keep minimum distance to power cables > 5 cm
- Available heaters depending on model: see combination table

FIELD SUPPLY

Only for *KRP1HB* & *KSOLHWAV1

2 core
230 V

2 core
230 V

2 core
230 V

2 core
230 V

2 core
230 V

2 core
230 V

2 core
230 V

2 core
230 V

2 core
230 V

2 core
230 V

2 core
230 V

2 core
230 V

2 core
230 V

2 core
230 V

2 core
230 V

2 core
230 V

2 core
230 V

2 core
230 V

2 core
230 V

2 core
230 V

2 core
230 V

2 core
230 V

2 core
230 V

2 core
230 V

2 core
230 V

2 core
230 V

2 core
230 V

2 core
230 V

2 core
230 V

2 core
230 V

2 core
230 V

2 core
230 V

2 core
230 V

2 core
230 V

2 core
230 V

2 core
230 V

2 core
230 V

2 core
230 V

2 core
230 V

2 core
230 V

2 core
230 V

2 core
230 V

2 core
230 V

2 core
230 V

2 core
230 V

2 core
230 V

2 core
230 V

2 core
230 V

2 core
230 V

2 core
230 V

2 core
230 V

2 core
230 V

2 core
230 V

2 core
230 V

2 core
230 V

2 core
230 V

2 core
230 V

2 core
230 V

2 core
230 V

2 core
230 V

2 core
230 V

2 core
230 V

2 core
230 V

2 core
230 V

2 core
230 V

2 core
230 V

2 core
230 V

2 core
230 V

2 core
230 V

2 core
230 V

2 core
230 V

2 core
230 V

2 core
230 V

2 core
230 V

2 core
230 V

EXTERNAL ROOM THERMOSTAT / HEAT PUMP CONVECTOR (main and/or additional zone)

OPTIONAL PART

3 core for CH operation
2 core for H only operation

230 V

230 V

230 V

230 V

230 V

230 V

230 V

230 V

230 V

230 V

230 V

* electrical meter specification

- pulse meter type/voltage free contact for 5 VDC detection by PCB
- possible number of pulse:
 - 0.1 pulse/kWh
 - 1pulse/kWh
 - 10pulse/kWh
 - 100 pulse/kWh
 - 1000 pulse/kWh
- pulse duration:
 - minimum On time 40ms
 - minimum OFF time 100ms
- measurement type (depending on installation):
 - single phase AC meter
 - three phase AC meter (balanced loads)
 - three phase AC meter (unbalanced loads)

* electrical meter installation guideline

- General: it is the responsibility of the installer to cover the complete power consumption with electrical meters (combination of estimation and metering is not allowed)
- Required number of electrical meters:

Outdoor unit type		*RLQ(04/06/08)*				*R*Q(011/014/016)*V3				*R*Q(011/014/016)*W1				
Indoor unit type		*HB(H/X)(04/08)C*				*HB(H/X)16C*				*HB(H/X)16C*				
	Backup heater type (#)	3V / 9W	9W		9W	3V / 9W	9W		9W	3V / 9W		9W		9W
	Backup heater power supply	1~ 230V	3~ 400V		3~ 230V	1~ 230V	3~ 400V		3~ 230V	1~ 230V		3~ 400V		3~ 230V
	Backup heater configuration	3 / 6 kW	6 / 9 kW		6 kW	3 / 6 kW	6 / 9 kW		6 kW	3 / 6 kW		6 / 9 kW		6 kW
		Regular kWh rate power supply												
Electrical meter type	1~	1	1	-	-	1	1	-	-	1	-	1	-	-
	3~ balanced	-	1	-	-	-	1	-	-	1	-	1	-	-
	3~ unbalanced	-	-	1	1	-	-	1	1	-	1	-	1	1
		Benefit kWh rate power supply												
Electrical meter type	1~	2	1	1	2	1	1	1	1	-	-	-	-	-
	3~ balanced	-	-	-	-	-	-	-	-	1	1	1	1	1
	3~ unbalanced	-	1	1	-	1	1	1	-	-	1	1	1	1

4D078288-B

DAIKIN EUROPE N.V.

Zandvoordestraat 300, B-8400 Oostende, Belgium

4P383118-1C 2015.01